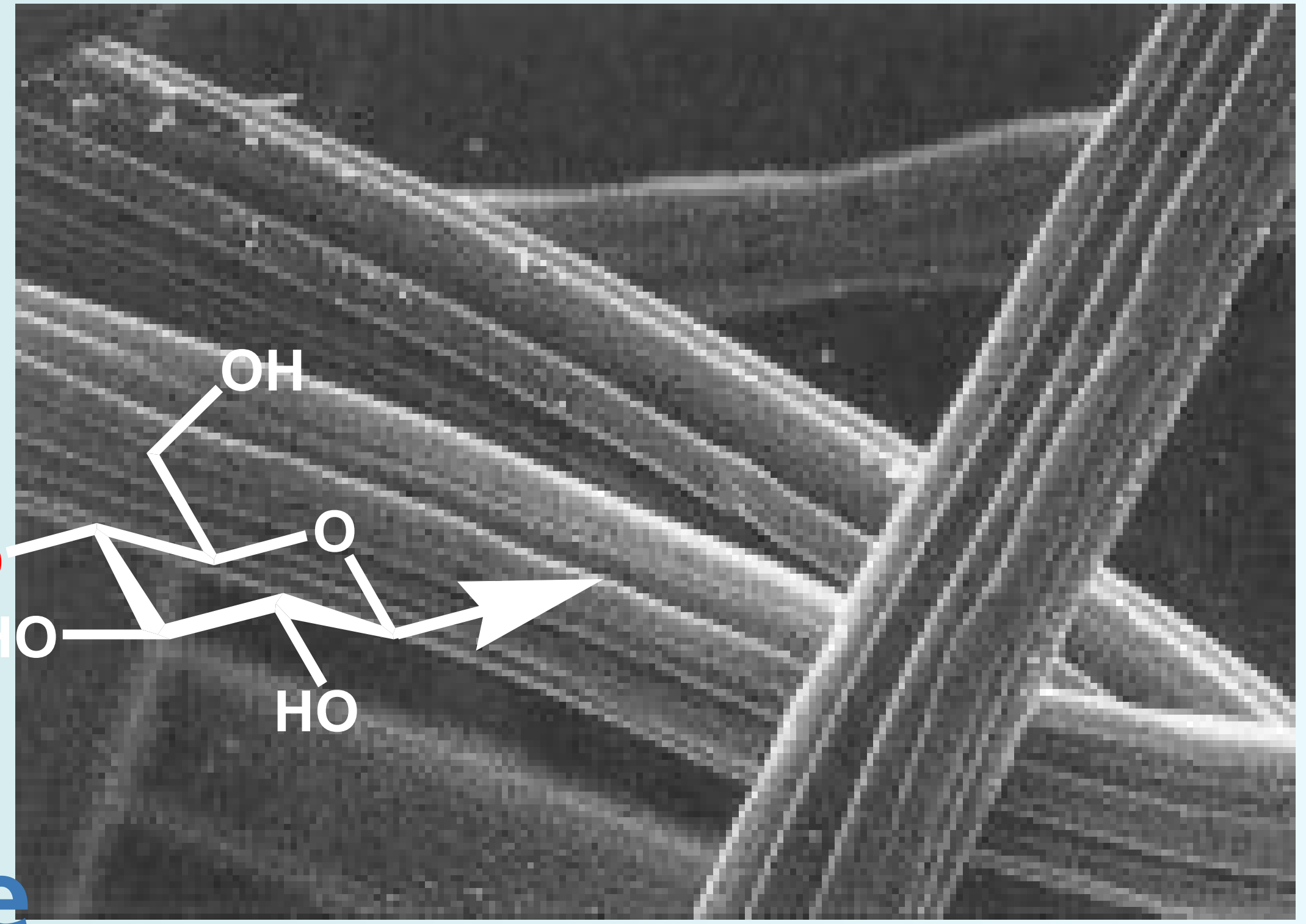
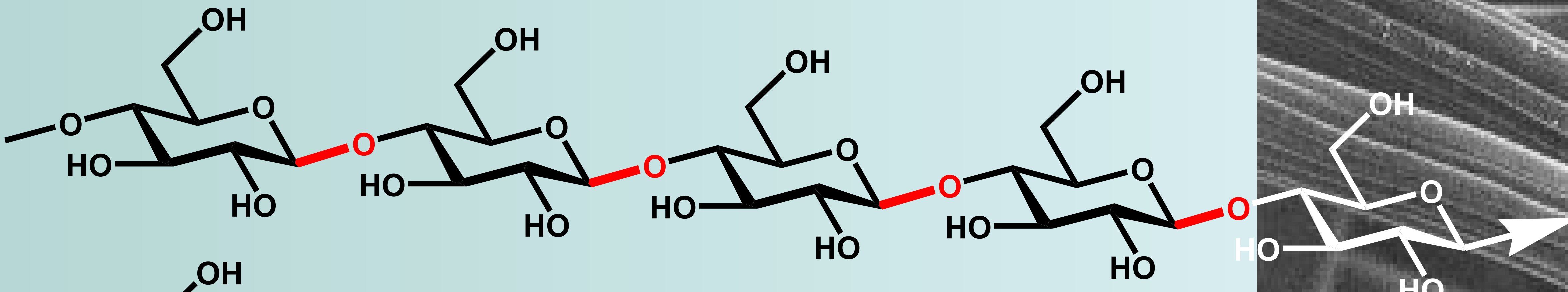


Kohlenhydrate und Überstruktur

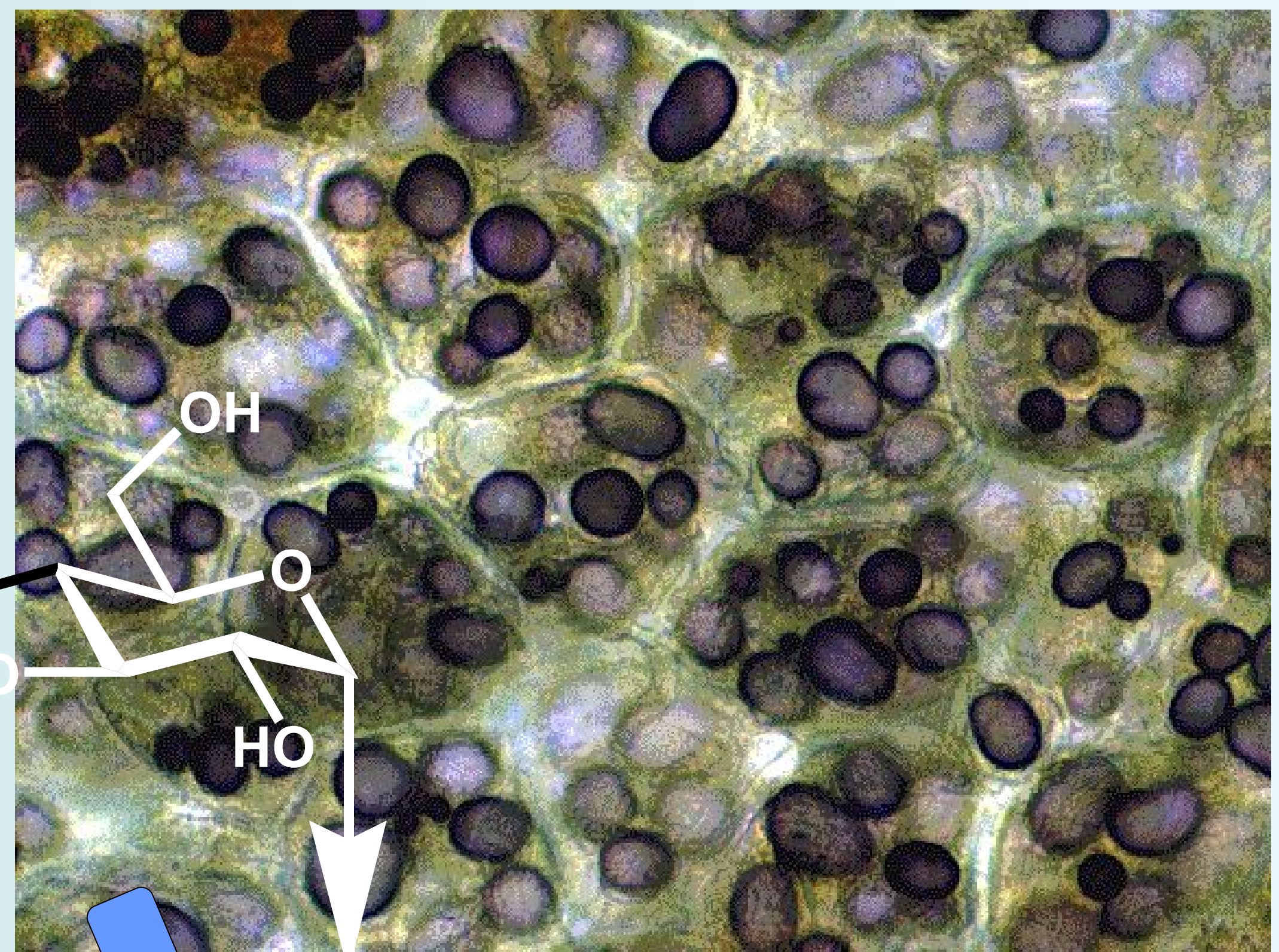
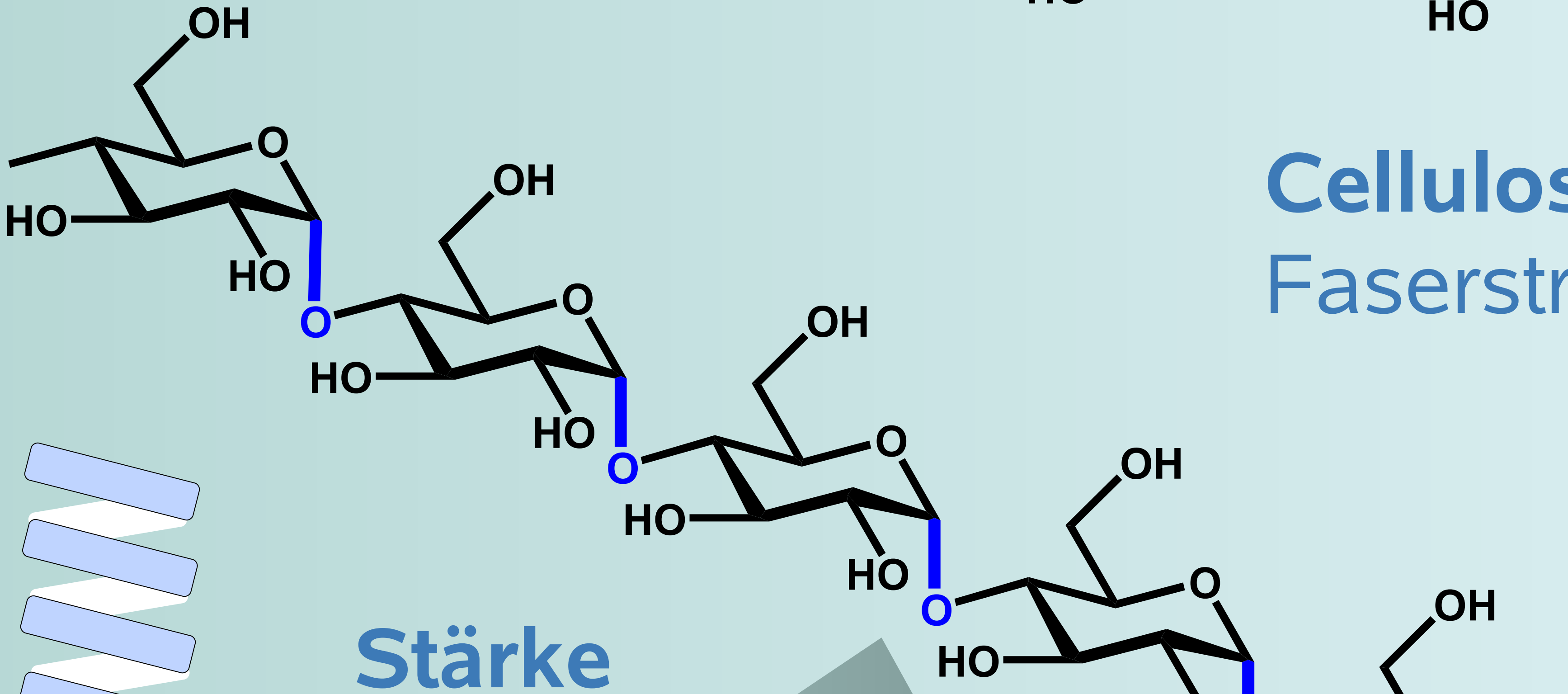
Arbeitskreis LINDHORST



Polysaccharide

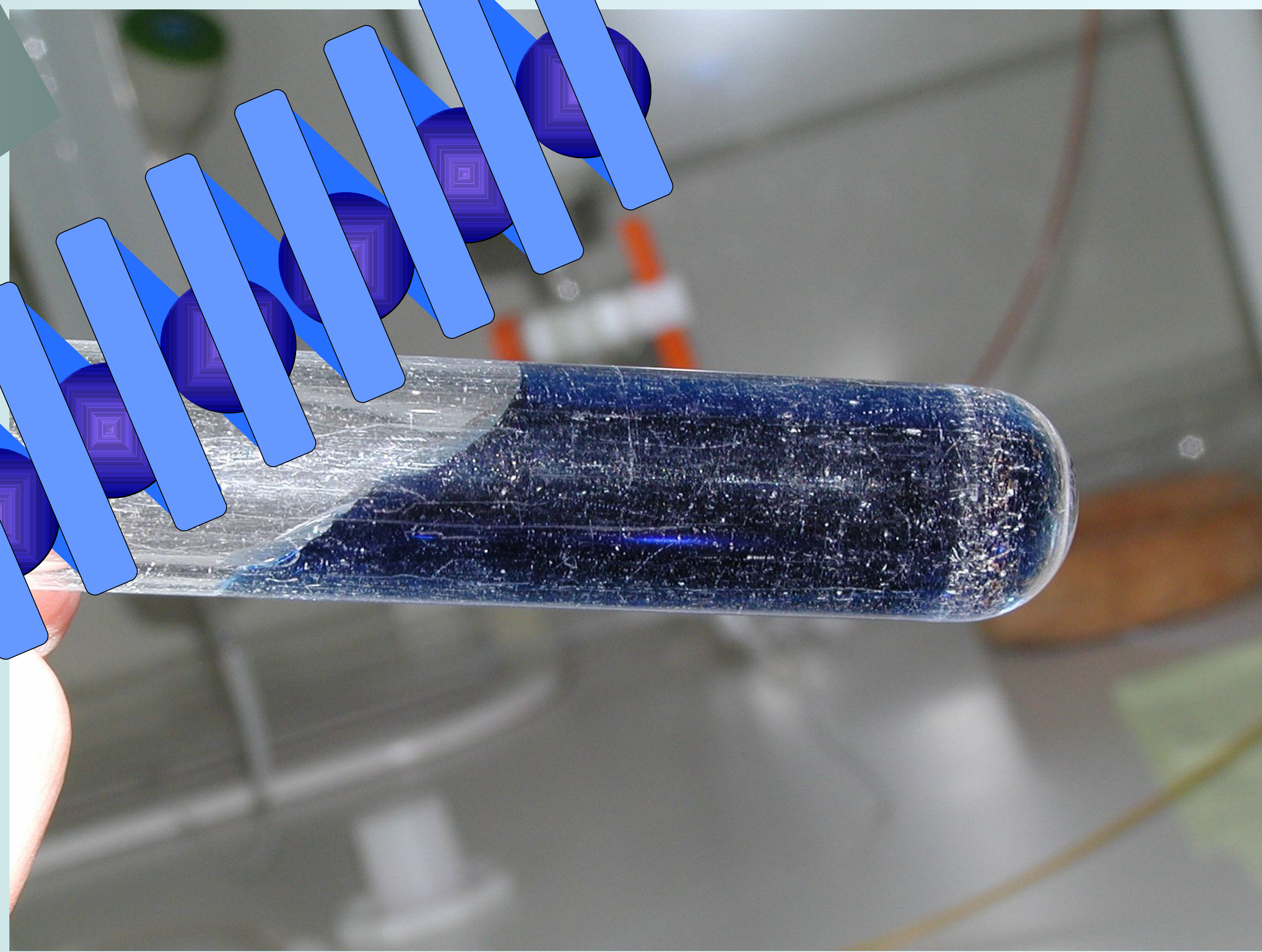


Cellulose
Faserstruktur, unverdaulich



Stärke
Energieförderant
helikale Überstruktur

Nachweis
Iod-Stärke-Reaktion



sektion chemie – biologische chemie

Noch mehr Zucker ...

